

FOR 2005
“HILLS AT ROSE CREEK”
(PHASES 1 & 2)

Parent Parcel(s) 32-4s-17-08926-000 (delete)

Parent Parcel 05-5s17-09116-000 150.08 - 111.02 = 39.06

Ac remaining.

Header Parcel 05-5s17-09116-100

A S/D of a part of S1/2 of Sec 32-4s-17E & a part of N1/2 of Sec 5-5s-17E, all lying North of I-75 & East of SW CR-131.

Containing 171.46 Ac & Phs 1 Rec in Plat Bk 7, Pg 150 & Phs 2 Rec in Plat Bk 7, Pg 154.

Landscape Areas - 32-4s-17-09116-099 0.15 Ac

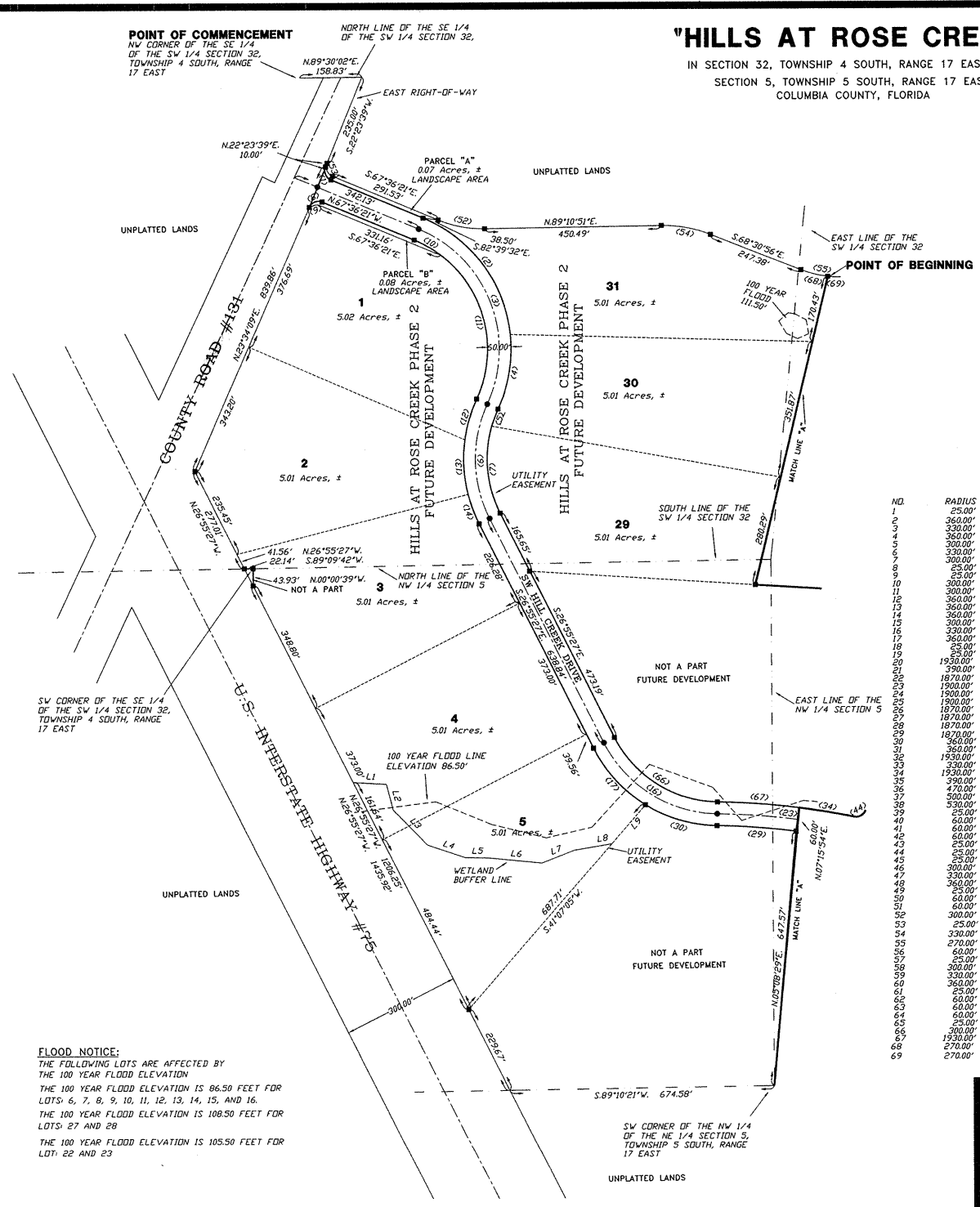
Lot 1	Phase 2	32-4s-17-09116-101	5.02 Ac
Lot 2	Phase 2	32-4s-17-09116-102	5.01 Ac
Lot 3	Phase 2	05-5s-17-09116-103	5.01 Ac
Lot 4	Phase 2	05-5s-17-09116-104	5.01 Ac
Lot 5	Phase 2	05-5s-17-09116-105	5.01 Ac
- - -	- - -	- - - - - - - - -	- - -
Lot 6	Phase 1	05-5s-17-09116-106	5.11 Ac
Lot 7	Phase 1	05-5s-17-09116-107	8.00 Ac
Lot 8		05-5s-17-09116-108	5.03 Ac
Lot 9		05-5s-17-09116-109	5.02 Ac
Lot 10		05-5s-17-09116-110	5.01 Ac
Lot 11		05-5s-17-09116-111	5.01 Ac
Lot 12		05-5s-17-09116-112	5.01 Ac
Lot 13		05-5s-17-09116-113	5.03 Ac
Lot 14		05-5s-17-09116-114	6.24 Ac
Lot 15		05-5s-17-09116-115	5.03 Ac
Lot 16		05-5s-17-09116-116	5.08 Ac
Lot 17		05-5s-17-09116-117	5.01 Ac
Lot 18		05-5s-17-09116-118	5.01 Ac
Lot 19		05-5s-17-09116-119	5.01 Ac
Lot 20		05-5s-17-09116-120	5.03 Ac
Lot 21		05-5s-17-09116-121	5.01 Ac
Lot 22		05-5s-17-09116-122	5.01 Ac

Lot 23		32-4s-17-09116-123	5.01 Ac
Lot 24		32-4s-17-09116-124	5.01 Ac
Lot 25		32-4s-17-09116-125	5.01 Ac
Lot 26		32-4s-17-09116-126	5.01 Ac
Lot 27		32-4s-17-09116-127	5.01 Ac
Lot 28	Phase 1	32-4s-17-09116-128	5.01 Ac
Lot 29	Phase 2	32-4s-17-09116-129	5.01 Ac
Lot 30	Phase 2	32-4s-17-09116-130	5.01 Ac
Lot 31	Phase 2	32-4s-17-09116-131	5.01 Ac

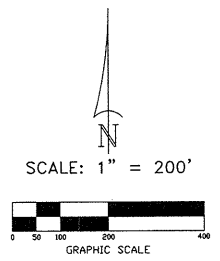
"HILLS AT ROSE CREEK"
 IN SECTION 32, TOWNSHIP 4 SOUTH, RANGE 17 EAST, AND
 SECTION 5, TOWNSHIP 5 SOUTH, RANGE 17 EAST,
 COLUMBIA COUNTY, FLORIDA

POINT OF COMMENCEMENT
 NW CORNER OF THE SE 1/4
 OF THE SW 1/4 SECTION 32,
 TOWNSHIP 4 SOUTH, RANGE
 17 EAST

POINT OF BEGINNING



SYMBOL LEGEND
 ■ PERMANENT REFERENCE MONUMENT
 ● PERMANENT CONTROL POINT
 TYP TYPICAL



CURVE TABLE

NO.	RADIUS	DELTA	ARC	TANGENT	CHORD	CHORD BEARING	Line	Bearing	Distance
1	25.00'	90°00'00"	25.00'	25.00'	35.35'	N22°36'21"E	L1	S86°56'42"E	83.63'
2	360.00'	61°46'35"	398.15'	215.35'	369.62'	S36°43'03"E	L2	S14°50'07"E	67.31'
3	330.00'	92°09'11"	323.50'	343.55'	47.73'	S21°17'14"E	L3	S09°36'04"W	47.73'
4	360.00'	30°53'52"	153.00'	99.37'	191.57'	S29°35'04"W	L4	S44°31'54"E	124.23'
5	300.00'	08°56'07"	46.44'	23.25'	46.39'	S20°35'39"W	L5	S71°33'53"E	100.56'
6	330.00'	51°57'20"	299.24'	160.29'	160.29'	N00°05'47"W	L6	S84°21'23"E	126.43'
7	300.00'	47°05'14"	265.60'	118.44'	220.33'	S05°22'50"E	L7	N68°36'10"E	88.56'
8	50.00'	90°00'00"	39.27'	50.00'	35.36'	N67°53'39"E	L8	N80°25'25"E	149.30'
9	300.00'	14°50'06"	77.68'	29.06'	7.46'	S60°11'18"E	L9	S62°39'41"E	97.31'
10	300.00'	77°49'08"	407.37'	240.08'	374.79'	S12°09'28"E	L10	N41°07'05"E	130.34'
11	360.00'	17°07'28"	107.60'	54.20'	107.26'	S16°28'09"W	L11 - L15	REMOVED	
12	360.00'	139°05'	139.05'	70.40'	139.18'	S10°09'28"E	L16	N05°08'29"E	304.99'
13	360.00'	15°42'06"	79.81'	40.07'	79.64'	S20°34'24"E	L17	N88°21'45"E	48.23'
14	360.00'	62°01'15"	324.74'	180.33'	309.12'	N57°56'05"W	L18	S86°25'12"E	156.91'
15	330.00'	60°01'15"	337.21'	193.37'	340.03'	N57°56'05"W	L19	S77°37'43"E	172.98'
16	360.00'	31°25'53"	197.49'	101.30'	195.02'	N05°08'29"E	L20	N70°41'46"E	76.37'
17	50.00'	91°34'10"	39.27'	50.00'	35.36'	S42°38'23"E	L21	N88°21'45"E	48.23'
18	50.00'	92°21'40"	40.73'	50.00'	35.36'	N88°21'45"E	L22	N8014'40"E	92.68'
19	1930.00'	20°03'42"	675.77'	341.39'	675.34'	S63°14'05"E	L23	S77°37'43"E	172.98'
20	590.00'	19°37'46"	123.16'	67.23'	126.51'	N05°07'51"E	L24 - L28	REMOVED	
21	1870.00'	09°32'44"	311.54'	156.13'	311.18'	S77°57'44"E	L29	N70°41'46"E	76.37'
22	1900.00'	11°52'10"	395.25'	196.34'	394.53'	N76°23'52"E	L30	N8014'40"E	92.68'
23	1900.00'	46°08'10"	1336.18'	731.30'	1364.98'	S67°53'37"E	L31	N22°52'15"E	143.03'
24	1900.00'	30°11'02"	1000.94'	512.37'	989.40'	S61°56'03"E	L32	N88°21'45"E	48.23'
25	1870.00'	08°21'42"	172.30'	156.20'	67.646'	N51°01'23"W	L33	N22°52'15"E	143.03'
26	1870.00'	10°12'26"	205.22'	117.77'	235.07'	N59°48'27"W	L34	N38°03'29"E	325.95'
27	1870.00'	10°46'43"	205.22'	117.77'	235.07'	S67°48'01"E	L35	S77°57'44"E	172.98'
28	1870.00'	08°08'06"	168.28'	104.44'	205.58'	N73°39'11"W	L36	S77°57'44"E	172.98'
29	360.00'	30°35'23"	162.50'	98.45'	189.93'	N73°39'11"W	L37	S77°57'44"E	172.98'
30	360.00'	25°15'44"	165.01'	83.88'	163.57'	N65°06'07"E	L38	S77°57'44"E	172.98'
31	1930.00'	02°48'33"	94.63'	47.32'	94.62'	S39°36'00"E	L39	S77°57'44"E	172.98'
32	1930.00'	04°13'59"	146.59'	71.33'	142.56'	S39°37'06"E	L40	S77°57'44"E	172.98'
33	390.00'	08°41'58"	45.60'	22.83'	45.58'	S69°45'17"E	L41	S62°59'09"E	64.34'
34	470.00'	16°55'44"	138.59'	73.89'	138.59'	N81°33'08"W	L42	S62°59'09"E	64.34'
35	500.00'	18°53'44"	147.44'	74.26'	146.91'	N81°33'08"W	L43	S62°59'09"E	64.34'
36	530.00'	16°53'44"	156.95'	78.27'	156.76'	N81°33'08"W	L44	S62°59'09"E	64.34'
37	600.00'	49°40'47"	21.68'	11.57'	21.00'	S65°09'36"E	L45	S62°59'09"E	64.34'
38	600.00'	65°45'47"	16.68'	8.67'	16.51'	N73°12'06"E	L46	S62°59'09"E	64.34'
39	600.00'	107°05'41"	13.04'	6.25'	9.705'	S1°56'40"E	L47	S62°59'09"E	64.34'
40	600.00'	105°39'06"	110.64'	79.12'	95.62'	S6°51'14"W	L48	S79°40'48"E	61.66'
41	25.00'	49°40'47"	21.68'	11.57'	21.00'	S65°09'36"E	L49	S61°43'21"E	148.14'
42	25.00'	80°25'50"	36.39'	24.32'	34.87'	N26°07'11"W	L50	N48°45'48"E	88.16'
43	25.00'	20°30'12"	107.55'	54.26'	106.78'	N80°35'12"W	L51	N04°21'41"E	156.14'
44	330.00'	118°09'	59.68'	117.46'	N80°35'12"W	L52	N77°53'06"E	223.01'	
45	360.00'	20°30'12"	128.63'	65.11'	128.14'	N80°32'44"E	L53	N80°32'44"E	164.23'
46	600.00'	49°40'47"	21.68'	11.57'	21.00'	N85°23'39"E	L54	S84°33'52"E	189.85'
47	600.00'	106°52'59"	111.93'	80.91'	96.39'	N63°30'09"W	L55	S66°03'21"E	190.71'
48	600.00'	110°55'39"	116.16'	87.18'	102.65'	S79°12'45"E	L56	S22°03'25"E	196.30'
49	300.00'	23°12'48"	121.54'	61.62'	120.71'	S79°12'45"E	L57	S22°03'25"E	196.30'
50	25.00'	90°00'00"	25.00'	25.00'	35.36'	S22°36'21"E	L58	S86°02'22"W	109.50'
51	330.00'	22°18'13"	128.46'	65.05'	127.65'	S79°40'26"E	L59	N63°49'06"W	79.96'
52	270.00'	21°59'03"	103.60'	52.44'	102.96'	S79°30'27"E	L60	N26°43'36"W	109.24'
53	60.00'	61°32'56"	64.45'	35.73'	61.40'	S70°15'23"W	L61	N20°51'35"E	112.39'
54	60.00'	49°40'47"	21.68'	11.57'	21.00'	S65°09'36"E	L62	S70°15'23"W	112.39'
55	300.00'	26°55'45"	141.00'	71.83'	139.71'	N31°53'37"E	L63	N72°50'43"E	89.78'
56	330.00'	26°55'45"	155.00'	79.01'	153.66'	N31°53'37"E	L64	N72°50'43"E	89.78'
57	360.00'	26°55'45"	168.29'	86.19'	167.65'	N31°53'37"E	L65	N00°20'00"W	107.84'
58	25.00'	49°40'47"	21.68'	11.57'	21.00'	N69°51'33"E			
59	106.65'	125°29'22"	131.59'	116.17'	116.17'	N59°48'27"W			
60	60.00'	65°46'27"	69.93'	39.54'	66.04'	N64°03'29"W			
61	60.00'	87°18'26"	61.33'	37.15'	62.76'	N59°48'27"W			
62	60.00'	49°40'47"	21.68'	11.57'	21.00'	S65°09'36"E			
63	300.00'	62°01'15"	324.74'	180.33'	309.12'	S57°56'05"E			
64	1930.00'	08°21'42"	172.30'	156.20'	67.646'	N51°01'23"W			
65	270.00'	15°01'36"	70.81'	35.61'	70.61'	S76°01'44"E			
66	270.00'	06°57'27"	32.79'	16.41'	32.77'	S87°01'19"E			

FLOOD NOTICE:
 THE FOLLOWING LOTS ARE AFFECTED BY
 THE 100 YEAR FLOOD ELEVATION
 THE 100 YEAR FLOOD ELEVATION IS 86.50 FEET FOR
 LOTS: 6, 7, 8, 9, 10, 11, 12, 13, 14, 15, AND 16.
 THE 100 YEAR FLOOD ELEVATION IS 108.50 FEET FOR
 LOTS: 27 AND 28
 THE 100 YEAR FLOOD ELEVATION IS 105.50 FEET FOR
 LOTS: 22 AND 23

SW CORNER OF THE NW 1/4
 OF THE NE 1/4 SECTION 5,
 TOWNSHIP 5 SOUTH, RANGE
 17 EAST

OFFICIAL RECORDS
 BOOK 1234 PAGE 1234
 FILE NUMBER 200-400-789
 FILED AND RECORDED IN THE OFFICIAL RECORDS
 OF COLUMBIA COUNTY, FLORIDA
2/19 1922 AT 12:52 P.M.
 RECORD VERIFIED
P. DEWITT CASON
 CLERK OF COURTS
 COLUMBIA COUNTY, FLORIDA
 BY: M. J. [Signature] D.C.



BRITT SURVEYING
 LAND SURVEYORS AND MAPPERS
 1426 WEST DUVAL STREET
 LAKE CITY, FLORIDA 32055
 TELEPHONE: (386) 752-7163 FAX: (386) 752-5573 WORK ORDER # L-12564

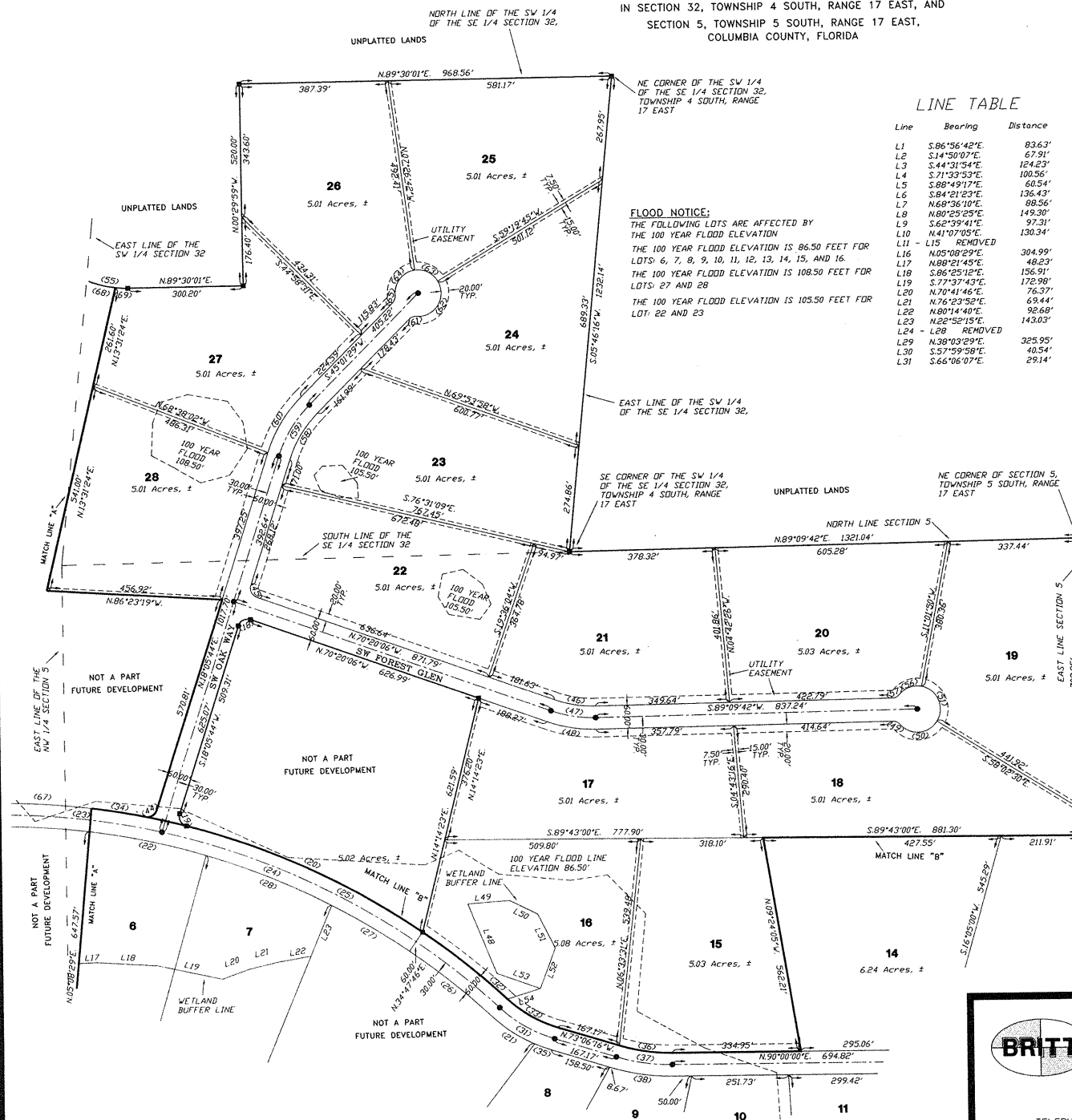
'HILLS AT ROSE CREEK'

IN SECTION 32, TOWNSHIP 4 SOUTH, RANGE 17 EAST, AND
SECTION 5, TOWNSHIP 5 SOUTH, RANGE 17 EAST,
COLUMBIA COUNTY, FLORIDA

PLAT BOOK 7
PAGES 152
SHEET 3 OF 4

OFFICIAL RECORDS
BOOK PAGE 1219

FILE NUMBER 200400200
FILED AND RECORDED IN THE OFFICIAL RECORDS
OF COLUMBIA COUNTY, FLORIDA
9/23 10:24 AM 2004
RECORD VERIFIED
AT 10:34 O'CLOCK AM
P. DEWITT CASON
CLERK OF COURTS
COLUMBIA COUNTY, FLORIDA
BY: [Signature] Clerk, D.C.



FLOOD NOTICE:
THE FOLLOWING LOTS ARE AFFECTED BY
THE 100 YEAR FLOOD ELEVATION
THE 100 YEAR FLOOD ELEVATION IS 86.50 FEET FOR
LOTS 6, 7, 8, 9, 10, 11, 12, 13, 14, 15, AND 16.
THE 100 YEAR FLOOD ELEVATION IS 108.50 FEET FOR
LOTS 27 AND 28
THE 100 YEAR FLOOD ELEVATION IS 105.50 FEET FOR
LOT 22 AND 23

LINE TABLE

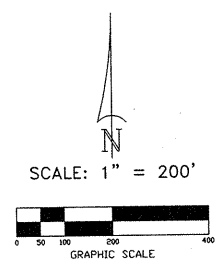
Line	Bearing	Distance
L1	S.86°56'42"E	83.63'
L2	S.14°50'07"E	67.91'
L3	S.44°31'54"E	124.23'
L4	S.71°33'53"E	100.56'
L5	S.88°49'17"E	60.54'
L6	S.84°21'23"E	136.43'
L7	N.69°36'10"E	88.56'
L8	N.80°25'25"E	149.30'
L9	S.62°39'41"E	97.31'
L10	N.41°07'05"E	130.34'
L11	L15 REMOVED	
L12	N.05°08'29"E	304.99'
L17	N.88°21'45"E	48.23'
L18	S.86°25'12"E	156.91'
L19	S.77°37'43"E	172.98'
L20	N.70°41'46"E	76.57'
L21	N.76°23'52"E	69.44'
L22	N.80°14'40"E	92.68'
L23	N.22°52'15"E	143.03'
L24	L28 REMOVED	
L29	N.38°03'29"E	325.95'
L30	S.57°59'58"E	40.54'
L31	S.66°06'07"E	29.14'

LINE TABLE

Line	Bearing	Distance
L32	S.39°36'00"E	92.39'
L33	S.76°26'18"E	65.32'
L34	S.62°59'09"E	64.34'
L35	S.82°02'57"E	67.24'
L36	N.83°11'06"E	52.07'
L37	S.56°44'53"E	112.00'
L38	S.6°11'02"E	112.96'
L39	S.68°50'19"E	70.82'
L40	S.79°40'48"E	61.66'
L41	S.61°43'21"E	148.14'
L42	N.48°45'48"E	88.15'
L43	N.04°21'41"E	156.14'
L44	N.77°53'06"E	223.81'
L45	N.80°32'44"E	164.23'
L46	S.84°33'52"E	189.89'
L47	S.66°03'21"E	190.71'
L48	S.22°03'25"E	196.30'
L49	S.86°02'22"E	105.50'
L50	N.63°49'05"W	79.96'
L51	N.66°43'56"W	100.24'
L52	N.20°51'35"E	112.39'
L53	S.70°14'59"E	119.38'
L54	N.72°50'43"E	89.78'
L55	N.00°20'30"W	107.84'

SYMBOL LEGEND

- PERMANENT REFERENCE MONUMENT
- PERMANENT CONTROL POINT
- TYP TYPICAL



CURVE TABLE

NO.	RADIUS	DELTA	ARC	TANGENT	CHORD	CHORD BEARING
1	25.00'	90°00'00"	39.27'	25.00'	35.36'	N.22°36'21"W
2	36.00'	61°46'39"	388.15'	215.35'	369.62'	S.36°43'03"E
3	36.00'	93°29'14"	345.55'	171.21'	329.17'	S.21°17'14"E
4	36.00'	30°51'35"	193.30'	99.37'	191.57'	S.09°36'04"E
5	300.00'	09°59'20"	299.24'	160.79'	289.10'	N.08°58'47"W
6	300.00'	43°05'14"	285.60'	118.44'	282.53'	N.05°56'47"W
7	300.00'	90°00'00"	392.71'	250.00'	353.66'	N.67°23'39"E
8	300.00'	14°58'00"	392.71'	250.00'	353.66'	S.60°11'18"E
9	300.00'	77°48'08"	407.37'	242.08'	376.79'	S.13°52'11"E
10	300.00'	17°07'28"	107.50'	34.20'	107.69'	S.16°28'09"E
11	360.00'	22°07'47"	139.05'	74.04'	136.19'	S.02°09'28"E
12	360.00'	12°42'06"	79.81'	40.07'	79.64'	S.20°34'24"E
13	360.00'	22°07'47"	139.05'	74.04'	136.19'	S.02°09'28"E
14	360.00'	66°01'15"	357.21'	198.37'	340.03'	N.57°56'05"W
15	360.00'	31°25'53"	197.49'	101.30'	195.02'	S.26°32'59"W
16	360.00'	66°01'15"	357.21'	198.37'	340.03'	N.57°56'05"W
17	360.00'	91°10'00"	40.74'	38.85'	36.38'	N.28°39'06"W
18	360.00'	19°33'46"	133.16'	67.23'	138.51'	N.56°37'25"W
19	1870.00'	09°32'44"	311.54'	156.13'	311.18'	S.75°47'44"E
20	1870.00'	11°45'08"	198.24'	104.53'	199.40'	S.81°14'49"E
21	1900.00'	42°06'10"	1386.19'	730.30'	1364.98'	S.67°39'37"E
22	1900.00'	08°51'42"	1893.34'	518.77'	1893.34'	S.05°08'15"E
23	1870.00'	07°18'26"	235.22'	117.77'	235.02'	N.51°01'23"W
24	1870.00'	10°45'47"	351.79'	175.41'	351.67'	S.67°48'01"E
25	1870.00'	06°16'36"	265.88'	101.44'	266.58'	N.85°50'54"W
26	360.00'	25°39'44"	165.01'	83.98'	163.57'	N.59°58'24"W
27	1930.00'	02°48'33"	94.57'	47.36'	94.57'	S.01°14'49"E
28	1930.00'	02°48'33"	94.57'	47.36'	94.57'	S.01°14'49"E
29	1930.00'	04°13'59"	142.59'	71.33'	142.56'	S.03°37'06"E
30	390.00'	16°45'44"	138.59'	69.80'	138.05'	N.81°33'08"W
31	390.00'	16°45'44"	138.59'	69.80'	138.05'	N.81°33'08"W
32	300.00'	16°53'44"	147.44'	74.26'	146.59'	N.81°33'08"W
33	300.00'	05°53'44"	156.29'	78.71'	156.29'	N.81°33'08"W
34	25.00'	49°40'47"	21.69'	11.57'	21.00'	S.65°09'36"W
35	60.00'	65°54'47"	68.87'	38.79'	65.13'	N.71°16'06"E
36	60.00'	105°39'06"	112.04'	82.50'	97.05'	S.19°56'40"E
37	25.00'	49°40'47"	21.69'	11.57'	21.00'	S.65°09'36"E
38	25.00'	83°54'09"	36.39'	22.28'	33.26'	S.59°47'49"W
39	25.00'	80°53'50"	38.53'	24.39'	34.73'	N.56°10'14"E
40	300.00'	20°30'12"	107.25'	54.26'	106.78'	N.80°35'12"W
41	330.00'	20°30'12"	118.05'	59.68'	117.46'	N.80°35'12"W
42	360.00'	20°30'12"	128.85'	65.11'	126.41'	N.80°35'12"W
43	60.00'	49°40'47"	21.69'	11.57'	21.00'	S.65°09'36"E
44	60.00'	105°39'06"	112.04'	82.50'	97.05'	S.19°56'40"E
45	60.00'	65°54'47"	68.87'	38.79'	65.13'	N.71°16'06"E
46	60.00'	105°39'06"	112.04'	82.50'	97.05'	S.19°56'40"E
47	60.00'	65°54'47"	68.87'	38.79'	65.13'	N.71°16'06"E
48	60.00'	105°39'06"	112.04'	82.50'	97.05'	S.19°56'40"E
49	60.00'	65°54'47"	68.87'	38.79'	65.13'	N.71°16'06"E
50	300.00'	23°12'48"	121.54'	61.62'	120.71'	S.91°12'45"E
51	25.00'	90°00'00"	39.27'	25.00'	35.36'	S.22°36'21"E
52	25.00'	92°18'13"	128.46'	65.05'	127.65'	S.79°40'02"E
53	270.00'	21°59'03"	103.60'	52.44'	102.96'	S.79°30'27"E
54	60.00'	61°32'52"	64.45'	36.43'	64.45'	S.64°43'03"E
55	60.00'	61°32'52"	64.45'	36.43'	64.45'	S.64°43'03"E
56	300.00'	26°55'45"	141.00'	71.83'	139.71'	S.04°19'18"W
57	330.00'	26°55'45"	153.10'	79.01'	153.68'	N.81°33'37"E
58	360.00'	26°55'45"	162.20'	86.19'	167.65'	N.81°33'37"E
59	25.00'	49°40'47"	21.69'	11.57'	21.00'	S.65°09'36"E
60	60.00'	123°23'32"	131.59'	116.19'	121.59'	S.91°12'45"E
61	60.00'	65°46'27"	69.93'	35.54'	66.04'	N.68°52'00"W
62	60.00'	65°46'27"	69.93'	35.54'	66.04'	N.68°52'00"W
63	25.00'	49°40'47"	21.69'	11.57'	21.00'	S.65°09'36"E
64	300.00'	62°11'36"	304.74'	180.39'	309.92'	S.08°11'06"E
65	300.00'	62°11'36"	304.74'	180.39'	309.92'	S.08°11'06"E
66	270.00'	15°01'36"	70.81'	35.61'	70.81'	S.05°50'24"E
67	270.00'	15°01'36"	70.81'	35.61'	70.81'	S.05°50'24"E
68	270.00'	15°01'36"	70.81'	35.61'	70.81'	S.05°50'24"E
69	270.00'	06°37'27"	38.79'	16.41'	38.77'	S.87°01'15"E

BRITT SURVEYING
LAND SURVEYORS AND MAPPERS
1426 WEST DUVAL STREET
LAKE CITY, FLORIDA 32055
TELEPHONE: (386) 752-7163 FAX: (386) 752-5573 WORK ORDER # L-12564

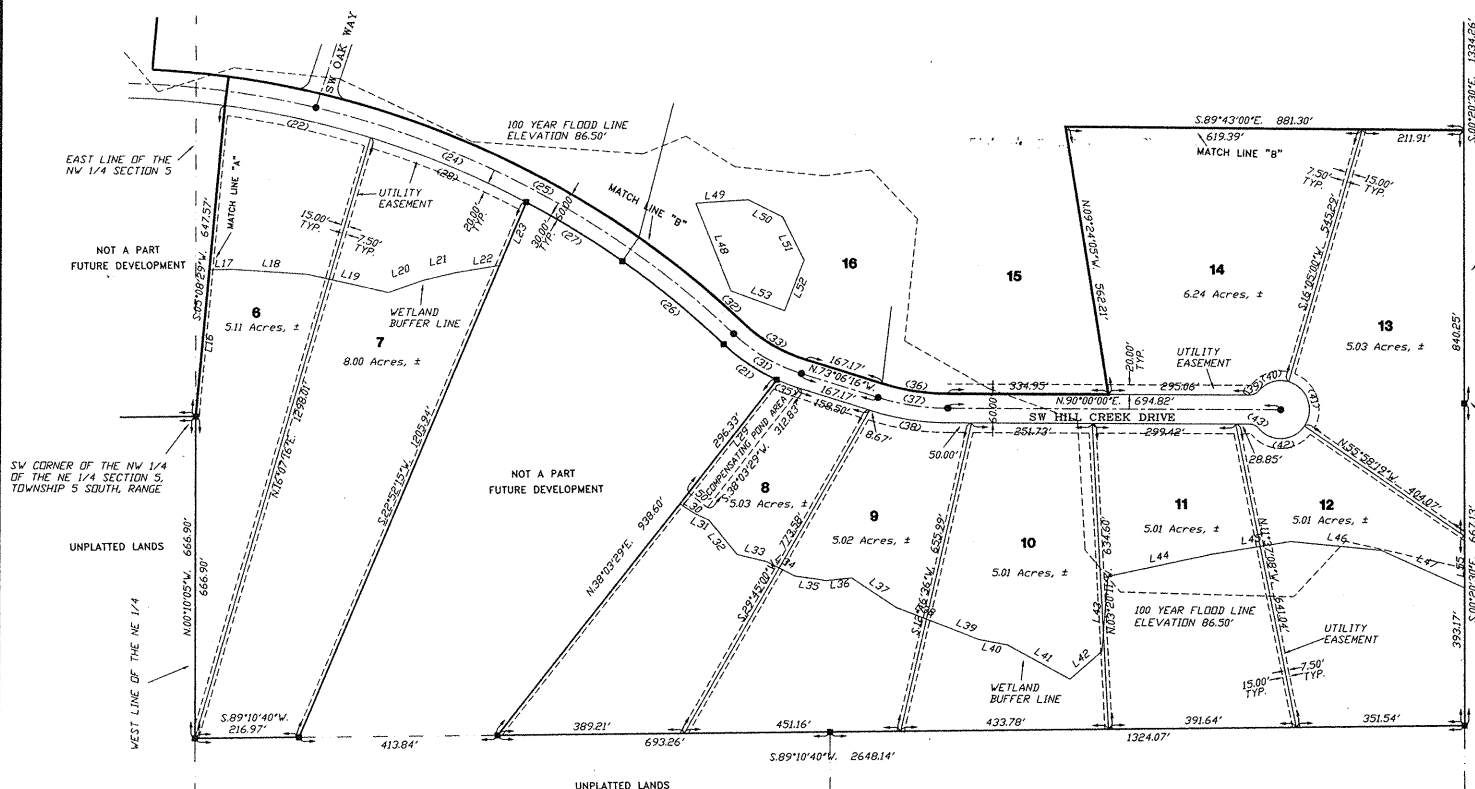
"HILLS AT ROSE CREEK"

IN SECTION 32, TOWNSHIP 4 SOUTH, RANGE 17 EAST, AND
SECTION 5, TOWNSHIP 5 SOUTH, RANGE 17 EAST,
COLUMBIA COUNTY, FLORIDA

PLAT BOOK **2**
PAGES **153**
SHEET 4 OF 4

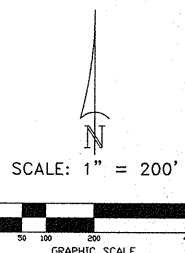
OFFICIAL RECORDS
BOOK PAGE 1229

FILE NUMBER 200402209
FILED AND RECORDED IN THE OFFICIAL RECORDS
OF COLUMBIA COUNTY, FLORIDA
2/19/04 AT 10:52 O'CLOCK A.M.
P. DEWITT GASON
CLERK OF COURTS
COLUMBIA COUNTY, FLORIDA
8th, *Marceline*



SYMBOL LEGEND

- PERMANENT REFERENCE MONUMENT
- PERMANENT CONTROL POINT
- TYP TYPICAL



LINE TABLE

Line	Bearing	Distance
L1	S.86°56'42"E	83.63'
L2	S.14°30'07"E	67.91'
L3	S.44°31'54"E	124.23'
L4	S.71°33'53"E	100.56'
L5	S.88°49'17"E	60.54'
L6	S.84°21'23"E	136.43'
L7	N.69°36'10"E	88.56'
L8	N.80°25'25"E	149.30'
L9	S.62°39'41"E	97.31'
L10	N.41°07'03"E	130.34'
L11	- L15 REMOVED	
L16	N.05°08'29"E	304.99'
L17	N.88°21'45"E	48.23'
L18	S.86°25'12"E	156.91'
L19	S.77°37'43"E	172.90'
L20	N.70°41'46"E	76.37'
L21	N.76°23'52"E	69.44'
L22	N.80°14'40"E	92.68'
L23	N.22°52'15"E	143.03'
L24	- L28 REMOVED	
L29	N.38°03'29"E	325.95'
L30	S.57°59'38"E	40.54'
L31	S.66°06'07"E	29.14'
L32	S.39°36'00"E	92.39'
L33	S.76°26'18"E	65.32'
L34	S.62°59'09"E	64.34'
L35	S.82°02'57"E	67.24'
L36	N.83°11'06"E	32.07'
L37	S.56°44'53"E	112.00'
L38	S.69°11'02"E	112.96'
L39	S.68°30'19"E	70.82'
L40	S.79°40'48"E	61.65'
L41	S.61°43'21"E	148.14'
L42	N.48°45'48"E	88.16'
L43	N.04°21'41"E	153.14'
L44	N.77°53'06"E	22.91'
L45	N.80°32'44"E	164.23'
L46	S.84°33'52"E	189.85'
L47	S.66°33'21"E	190.71'
L48	S.39°33'03"E	193.50'
L49	S.86°02'22"E	189.50'
L50	N.63°49'06"E	79.96'
L51	N.26°43'56"E	102.24'
L52	N.05°18'58"E	112.93'
L53	S.70°14'59"E	119.38'
L54	N.72°50'43"E	89.78'
L55	N.00°20'30"E	107.84'

CURVE TABLE

NO.	RADIUS	DELTA	ARC	TANGENT	CHORD	CHORD BEARING
1	25.00'	90°00'00"	39.27'	25.00'	35.36'	N.22°36'21"W
2	36.00'	61°46'03"	388.15'	215.35'	368.66'	S.36°43'03"E
3	330.00'	92°38'14"	533.55'	345.55'	477.31'	S.21°17'14"E
4	36.00'	305°1'39"	193.90'	93.37'	191.57'	S.89°36'04"W
5	300.00'	80°52'07"	46.44'	23.26'	46.39'	S.20°35'50"W
6	330.00'	351°57'50"	299.24'	160.79'	269.10'	N.00°56'47"W
7	300.00'	43°05'14"	625.60'	118.44'	230.33'	S.83°56'30"E
8	25.00'	90°00'00"	39.27'	25.00'	35.36'	N.22°39'39"E
9	300.00'	305°00'00"	77.68'	39.06'	77.46'	S.60°11'18"E
10	360.00'	177°49'08"	407.37'	242.08'	376.79'	S.13°56'11"E
11	300.00'	17°07'28"	102.60'	54.00'	107.50'	S.16°58'03"W
12	360.00'	22°07'47"	139.05'	70.40'	138.18'	S.03°09'28"E
13	360.00'	62°42'06"	74.81'	40.07'	79.54'	S.20°34'24"E
14	300.00'	62°01'15"	324.74'	180.33'	309.12'	N.57°56'05"W
15	330.00'	65°01'15"	371.21'	198.37'	340.03'	N.57°56'05"W
16	360.00'	91°52'53"	197.49'	101.30'	193.06'	N.89°38'21"E
17	65.00'	91°24'10"	49.24'	25.69'	35.84'	S.63°42'49"W
18	1930.00'	20°03'42"	675.77'	341.38'	672.32'	S.65°14'05"E
19	390.00'	19°33'46"	133.16'	67.23'	132.51'	N.56°37'25"W
20	1870.00'	09°32'44"	311.54'	156.13'	311.81'	S.77°57'44"E
21	1900.00'	11°53'08"	395.25'	198.34'	394.53'	S.82°59'08"E
22	1900.00'	42°06'10"	136.18'	70.30'	136.98'	S.67°53'37"E
23	1900.00'	30°11'02"	1000.94'	512.37'	989.40'	S.61°56'03"E
24	1870.00'	08°51'25"	276.90'	138.70'	272.66'	N.51°01'23"W
25	1870.00'	07°12'56"	276.90'	138.70'	272.66'	N.51°01'23"W
26	1870.00'	10°46'43"	351.79'	176.41'	351.27'	S.67°48'01"E
27	360.00'	95°19'25"	485.20'	245.50'	485.33'	N.85°50'24"W
28	360.00'	26°15'44"	165.01'	83.98'	163.57'	N.59°58'24"W
29	1930.00'	08°48'24"	246.53'	124.62'	246.63'	S.81°41'14"E
30	330.00'	26°15'44"	151.26'	76.98'	149.24'	S.59°58'24"E
31	1930.00'	04°13'39"	142.35'	71.33'	142.36'	S.80°37'06"E

CURVE TABLE

NO.	RADIUS	DELTA	ARC	TANGENT	CHORD	CHORD BEARING
32	390.00'	06°41'59"	45.60'	26.83'	45.58'	S.69°45'17"E
33	470.00'	16°53'44"	128.59'	69.80'	138.09'	N.81°33'08"W
34	500.00'	16°53'44"	147.44'	74.26'	146.91'	N.81°33'08"W
35	530.00'	16°53'44"	156.29'	78.71'	155.72'	N.81°33'08"W
36	60.00'	107°56'41"	6.87'	36.79'	6.87'	S.19°56'40"E
37	60.00'	105°39'06"	110.64'	79.12'	92.50'	S.86°51'14"W
38	25.00'	49°40'47"	11.57'	21.00'	11.57'	S.65°09'36"E
39	25.00'	49°40'47"	36.38'	33.26'	33.26'	S.51°47'49"W
40	25.00'	88°25'20"	39.59'	24.32'	34.87'	N.26°07'11"W
41	300.00'	20°30'12"	107.25'	54.26'	106.78'	N.80°30'12"W
42	300.00'	20°30'12"	119.03'	59.68'	117.46'	N.80°35'12"W
43	360.00'	20°30'12"	128.89'	65.11'	128.14'	N.80°35'12"W
44	60.00'	105°52'59"	21.68'	11.57'	21.00'	S.65°09'36"E
45	60.00'	105°52'59"	111.93'	80.91'	96.39'	N.65°23'59"E
46	60.00'	110°55'59"	116.16'	87.18'	98.85'	N.23°30'20"W
47	300.00'	23°12'48"	121.54'	61.62'	120.71'	S.79°12'45"E
48	25.00'	90°00'00"	39.27'	25.00'	35.36'	S.22°36'21"E
49	330.00'	22°18'13"	128.46'	65.05'	127.65'	S.79°40'02"E
50	25.00'	61°32'56"	103.60'	52.44'	102.96'	S.79°30'29"E
51	25.00'	61°32'56"	64.45'	35.73'	61.40'	S.70°15'23"W
52	300.00'	49°40'47"	21.68'	11.57'	21.00'	S.65°09'36"E
53	300.00'	26°55'45"	141.00'	71.83'	139.71'	N.31°53'37"E
54	300.00'	26°55'45"	155.10'	79.01'	152.68'	N.31°53'37"E
55	360.00'	105°55'59"	116.16'	87.18'	98.85'	N.23°30'20"W
56	25.00'	49°40'47"	11.57'	21.00'	11.57'	S.65°09'36"E
57	60.00'	125°22'22"	131.29'	116.19'	106.62'	N.32°01'01"E
58	60.00'	87°12'36"	91.32'	57.15'	82.76'	S.38°57'00"W
59	25.00'	49°40'47"	21.68'	11.57'	21.00'	S.65°09'36"E
60	60.00'	62°01'15"	324.74'	180.33'	309.12'	S.57°56'05"E
61	360.00'	95°19'25"	208.18'	104.63'	208.00'	N.85°50'24"W
62	270.00'	15°01'36"	70.81'	35.61'	70.61'	S.76°10'44"E
63	270.00'	16°57'27"	32.79'	16.41'	32.77'	S.87°01'15"E

FLOOD NOTICE:

THE FOLLOWING LOTS ARE AFFECTED BY
THE 100 YEAR FLOOD ELEVATION
THE 100 YEAR FLOOD ELEVATION IS 86.50 FEET FOR
LOTS: 6, 7, 8, 9, 10, 11, 12, 13, 14, 15, AND 16.
THE 100 YEAR FLOOD ELEVATION IS 108.50 FEET FOR
LOTS: 27 AND 28
THE 100 YEAR FLOOD ELEVATION IS 105.50 FEET FOR
LOT: 22 AND 23



BRITT SURVEYING

LAND SURVEYORS AND MAPPERS

1426 WEST DUVAL STREET
LAKE CITY, FLORIDA 32055

TELEPHONE: (386) 752-7163 FAX: (386) 752-5973 WORK ORDER # L-12564