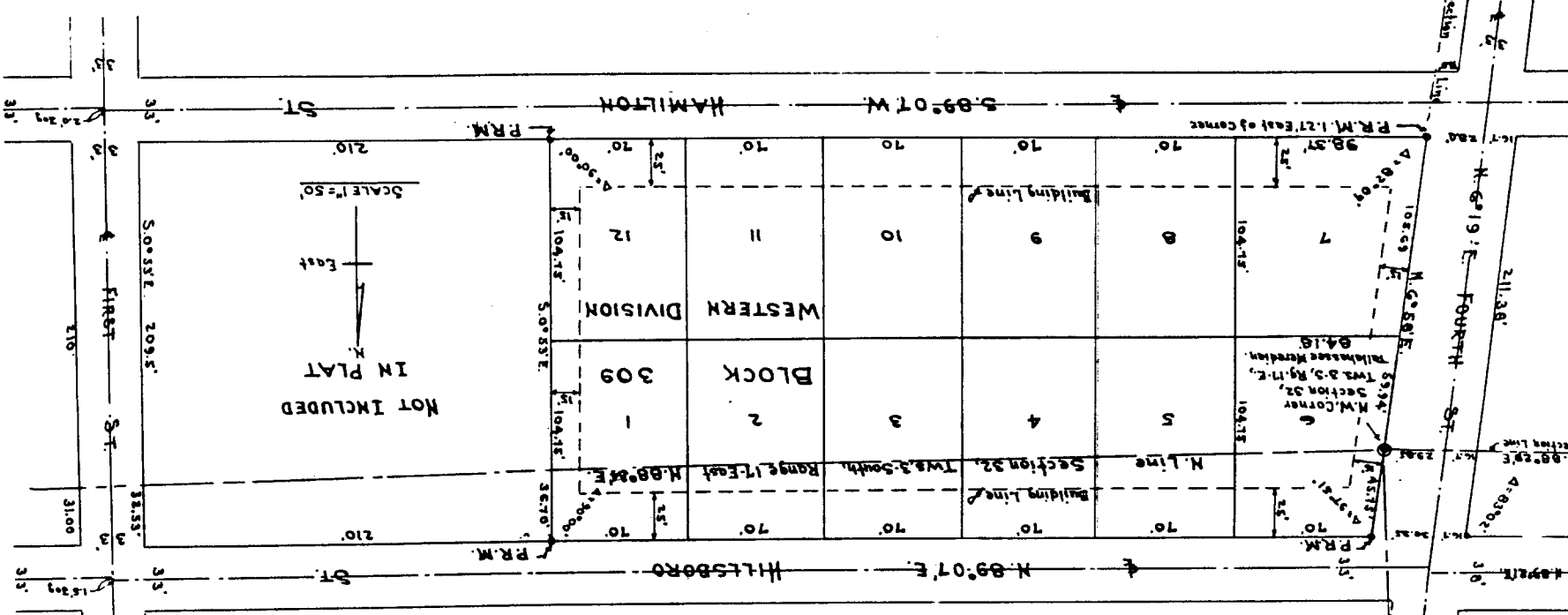


# A SUBDIVISION OF A PART OF BLOCK 309, WESTERN DIVISION, CITY OF LAKE CITY, FLORIDA

DESCRIPTION: Begin at the Northwest Corner of Section 32, Township 3-South, Range 17-East, Tallahassee Meridian and run thence North 6° 58' East 45.15 feet; thence North 89° 07' East 420 feet; thence South 0° 53' East 209.50 feet; thence South 89° 07' West 448.7 feet; thence N 6° 58' East 165.3 feet to POINT OF BEGINNING.



## DEDICATION

Know all men by these present, that Columbia County Properties, Incorporated, a Florida corporation, owners, have caused the lands on this plat to be surveyed, laid out and platted to be known as a subdivision of a part of Block 309, Western Division, City of Lake City, Florida. In witness whereof, the said Columbia County Properties, Incorporated has caused these presents to be signed in its name by its President, and its corporate seal to be affixed, attested by its Secretary, this the 25th day of July, A.D. 1940.

Attested: [Signature] Secretary  
[Signature] President

## ACKNOWLEDGMENT

State of Florida,  
 County of Columbia

I hereby certify, that on this 25th day of July, A.D. 1940, before me personally appeared [Signature] and [Signature], respectively President and Secretary of Columbia County Properties, Inc., a corporation under the laws of the State of Florida, to me known to be the individuals and officers described in and who executed the foregoing dedication and severally acknowledged the execution thereof to be their free act and deed as such officers thereunto duly authorized; and that the official seal of said corporation is duly affixed thereto, and the said dedication is the act and deed of said corporation.

WITNESSED, my signature and official seal at Lake City, State of Florida the day and year last aforesaid.

[Signature]  
 Notary Public, State of Florida

My Commission Expires Feb 1 A.D. 1940 on the 1 day of Feb

## SURVEYORS CERTIFICATE

I hereby certify that I am a registered Land Surveyor and that the plat hereon delineated, was made under my direction and that the plat is a true and correct representation of the lands platted and that permanent Reference Monuments have been placed as indicated on the plat and in compliance with the laws.

[Signature]  
 Marcel Mayeaux  
 Land Surveyor, State of Florida, Certificate No. 104

Approved By County Commission,  
 Columbia County, Florida

Date: July 25 1940  
 Signed: [Signature] Chairman  
[Signature] Clerk

Approved By City Commission,  
 Lake City, Florida

Date: July 25 1940  
 Signed: [Signature] Mayor Commissioner  
[Signature] Clerk

Binding Margin