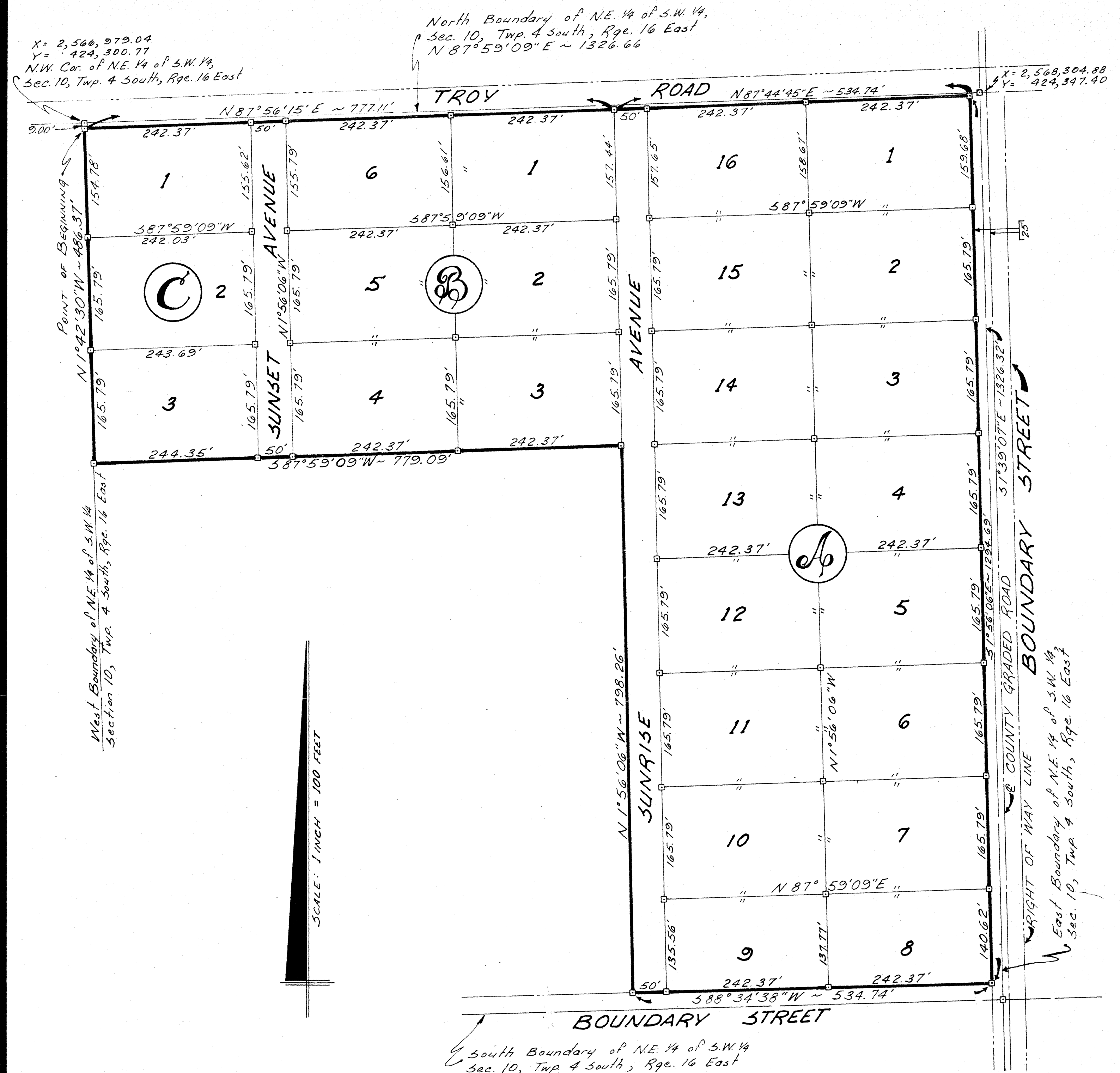


TROY PINES

IN THE N.E. 1/4 OF THE S.W. 1/4 OF SECTION 10, TOWNSHIP 4 SOUTH, RANGE 16 EAST COLUMBIA COUNTY, FLORIDA



DESCRIPTION:

COMMENCE at the Northwest Corner of the N.E. 1/4 of the S.W. 1/4, Section 10, Township 4 South, Range 16 East, Columbia County, Florida and run S 1°42'30"E along the West Line of said N.E. 1/4 of S.W. 1/4 a distance of 9.00 feet to the South Right of Way Line of TROY ROAD, a County maintained road, and the POINT OF BEGINNING; thence N 87°56'15"E along the South Line, said Troy Road, 777.11 feet; thence N 87°44'45"E still along said South Line 534.74 feet to the West Right of Way Line of a County Graded Road; thence S 1°56'06"E along said West Right of Way Line 1294.69 feet to the North Right of Way Line of a County Graded Road; thence S 88°34'38"W along said North Right of Way Line 534.74 feet to the West Right of Way Line of a County Graded Road; thence N 1°56'06"W 798.26 feet; thence S 87°59'09"W 779.09 feet to the West Line of said N.E. 1/4 of S.W. 1/4; thence N 1°42'30"W along the West Line of said N.E. 1/4 of S.W. 1/4 a distance of 486.37 feet to the POINT OF BEGINNING.

DEDICATION:

Know all men by these present that SUWANCOL CORPORATION, a Florida Corporation, has caused the lands hereon described to be Surveyed, Laid Out, Subdivided, and Platted, to be known as TROY PINES, in witness thereof the said SUWANCOL CORPORATION has caused these present to be signed in its name by its President and Secretary and its Corporate Seal to be affixed, and that the Streets and Roads as shown are hereby dedicated to the Public.

SUWANCOL CORPORATION

Signed: Lenvil H. Dicks, President
 Attest: R. A. Greene, Secretary
 Date: November 5, 1968

Witness: Ben J. Walker
Edwin Smithell

ACKNOWLEDGEMENT:

STATE OF FLORIDA
 COUNTY OF COLUMBIA

I HEREBY CERTIFY that on this 5TH day of NOVEMBER, 1968 before me personally appeared LENVIL H. DICKS and R. A. GREENE, respectively President and Secretary of SUWANCOL CORPORATION, a corporation licensed by the State of Florida, to me known to be the individuals and officers described in and who executed the foregoing dedication and severally acknowledged the execution thereof to be their free act and deed as such officers thereunto duly authorized and that the Official Seal of said corporation is duly affixed thereto and the said dedication is the act and deed of said corporation.

Witness my hand and Official seal at Lake City, State of Florida this 5th day of November, 1968.

Mrs. Michele D. Buccini
 NOTARY PUBLIC, My Commission Expires October 6, 1972

APPROVED BY BOARD OF COUNTY COMMISSIONERS, COLUMBIA COUNTY, FLORIDA

Signed: C. Clifton Little, Chairman
 Attest: H. W. Roberts, Clerk
 Date: November 5, 1968

CERTIFICATION:

I HEREBY CERTIFY that I am a duly authorized and qualified land surveyor, and that the land hereon described has been surveyed, laid out, and subdivided as shown on this Plat under my direction, and that Concrete Monuments have been placed as shown hereon.

Signed: Willis C. Melvin
 WILLIS C. MELVIN, R.L.S.
 Fla. Reg. Cert. No. 1918

LEGEND:

1. □ = Concrete Monuments, unless otherwise noted.
2. Bearings projected from Florida State Plane Coordinate System.
3. Coordinates shown are from Florida State Plane Coordinate System.

Clerk's No. 68-4032
 State of Florida, County of Columbia
 Filed for record on this 20 day of November, 1968
 Witness my hand and official seal, at the last aforesaid
G. W. ROBERTS, Clerk Circuit Court
Edwin Smithell